



SAFA GATE
SHEIKH ZAYED ROAD



URBAN VERVE
MEETS NATURAL
SERENITY



THE
HIGHPPOINT
OF
PANORAMIC
LIVING

A woman with long, wavy brown hair, wearing a black sequined dress and a long earring, is shown in profile from the chest up. She is looking out of a window at a panoramic view of a city skyline at sunset. The sun is low on the horizon, casting a warm glow over the city. The Burj Khalifa is visible on the left side of the skyline. The city lights are visible in the foreground and middle ground. The background shows a blurred view of a city at night, with lights from buildings and streets. The overall mood is serene and sophisticated.



YOUR GATEWAY TO THE SHEIKH ZAYED ROAD PLATINUM DISTRICT

SAFA GATE redefines the essence of the Platinum District's opulent living experience. It is your key to unlocking the best of Dubai's vibrant urban spirit. Step into a world where convenience meets sophistication, and make your mark in one of the most coveted address in the region.

RISE ABOVE THE CITY
AND EXPERIENCE
LUXURY THAT MAKES
YOUR SPIRIT SOAR


SAFA GATE
SHEIKH ZAYED ROAD


SAFA GATE



 **DUBRICKS**
POSSIBILITIES ARE LIMITLESS

YOUR TOWERING URBAN OASIS AWAITS

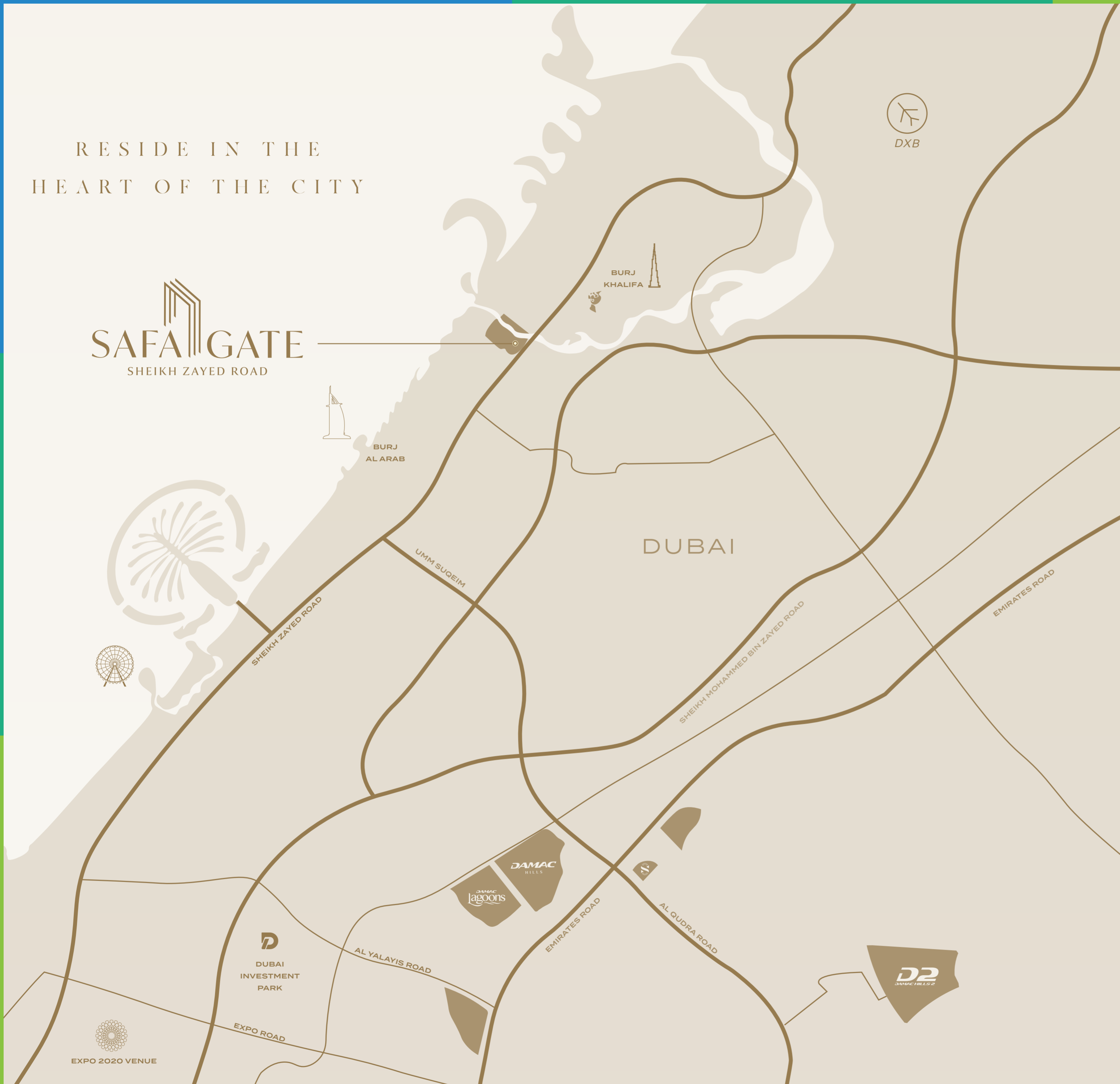
SAFA GATE stands as a landmark of architectural ingenuity and luxury living. Its sleek, soaring silhouette pierces the Dubai skyline, featuring a stunning glass façade that reflects the city's vibrant energy. The tower's distinctive design incorporates bold design elements, creating a visual masterpiece that is as functional

as it is beautiful. With its innovative sky gardens and panoramic viewing decks, SAFA GATE blurs the line between indoor and outdoor living, offering residents unparalleled views and a sense of floating above the bustling metropolis.



RESIDE IN THE
HEART OF THE CITY

SAFA GATE
SHEIKH ZAYED ROAD




7 MINS
BURJ KHALIFA


9 MINS
DUBAI INTERNATIONAL
FINANCIAL CENTRE


10 MINS
THE STABLES DUBAI, MEYDAN


12 MINS
MGM RESORT ISLAND


14 MINS
DUBAI INTERNATIONAL AIRPORT


14 MINS
DUBAI HARBOUR


14 MINS
DUBAI CREEK GOLF
& YACHT CLUB


16 MINS
PALM JUMEIRAH


35 MINS
JETEX VIP TERMINAL



A MESMERISING GALLERY OF MATCHLESS CITYSCAPES

Enjoy a never seen before perspective of Dubai's stunning natural landscape. Discover a world of natural wonder from the emerald expanse of Safa park flora to the tranquil embrace of the Jumeirah seascape. Every day

offers a new masterpiece painted across the infinite sky right outside your window. Not to mention the views of Dubai icons, such Dubai Canal, Burj Al Arab and Burj Khalifa across Sheikh Zayed Road.



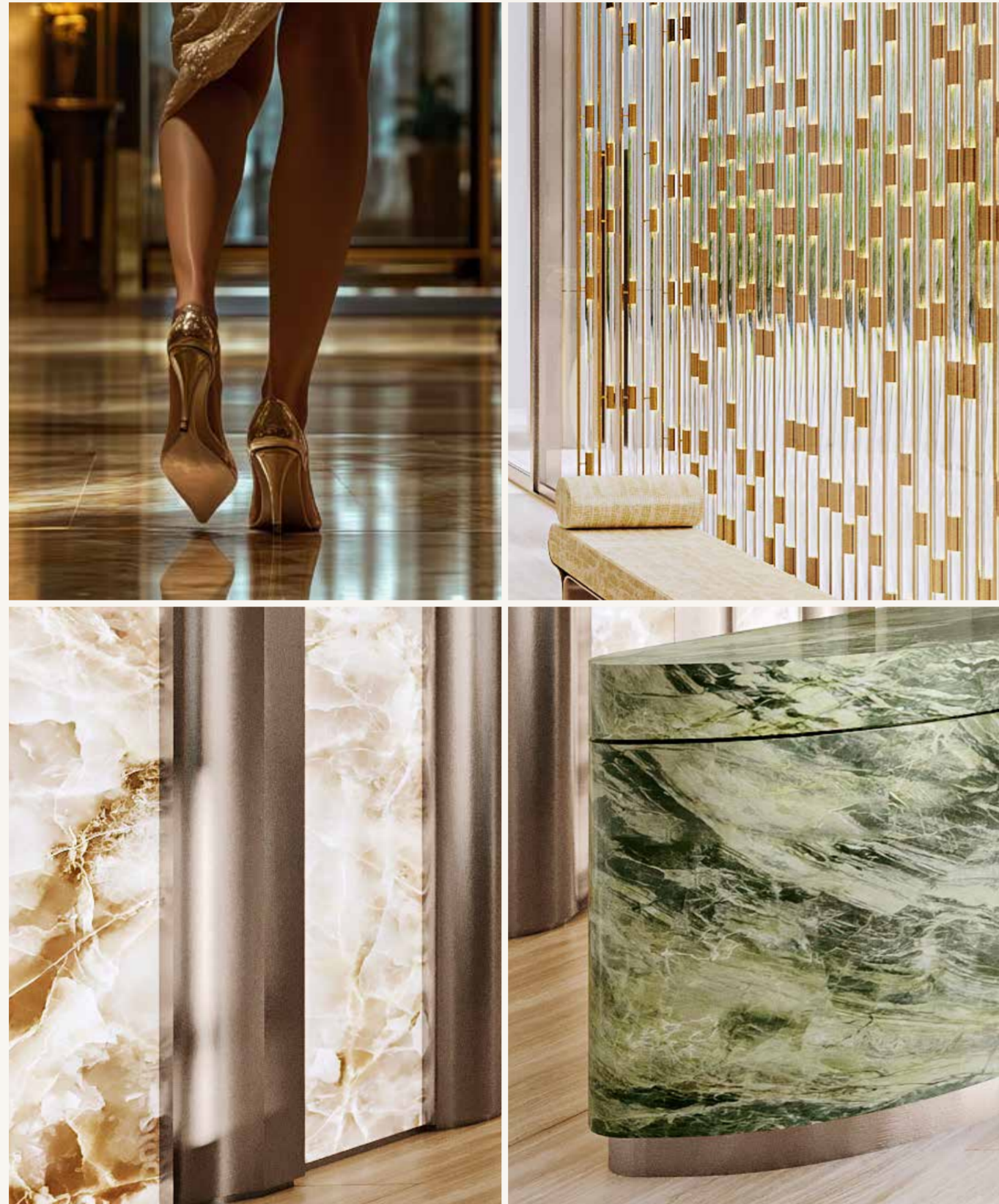


THE EPICENTRE OF EFFORTLESS LIVING

Nestled along Sheikh Zayed Road, Safa Gate emerges as a sophisticated urban sanctuary seamlessly blending metropolitan energy with serene living. Strategically positioned beside the lush Safa Park and the Dubai Canal, this location offers residents an extraordinary lifestyle anchored by proximity to Dubai's most coveted destinations - from the vibrant City Walk and sophisticated Jumeirah to the iconic Dubai Mall and cultural Al Wasl Road.



KINETIC GEOMETRY

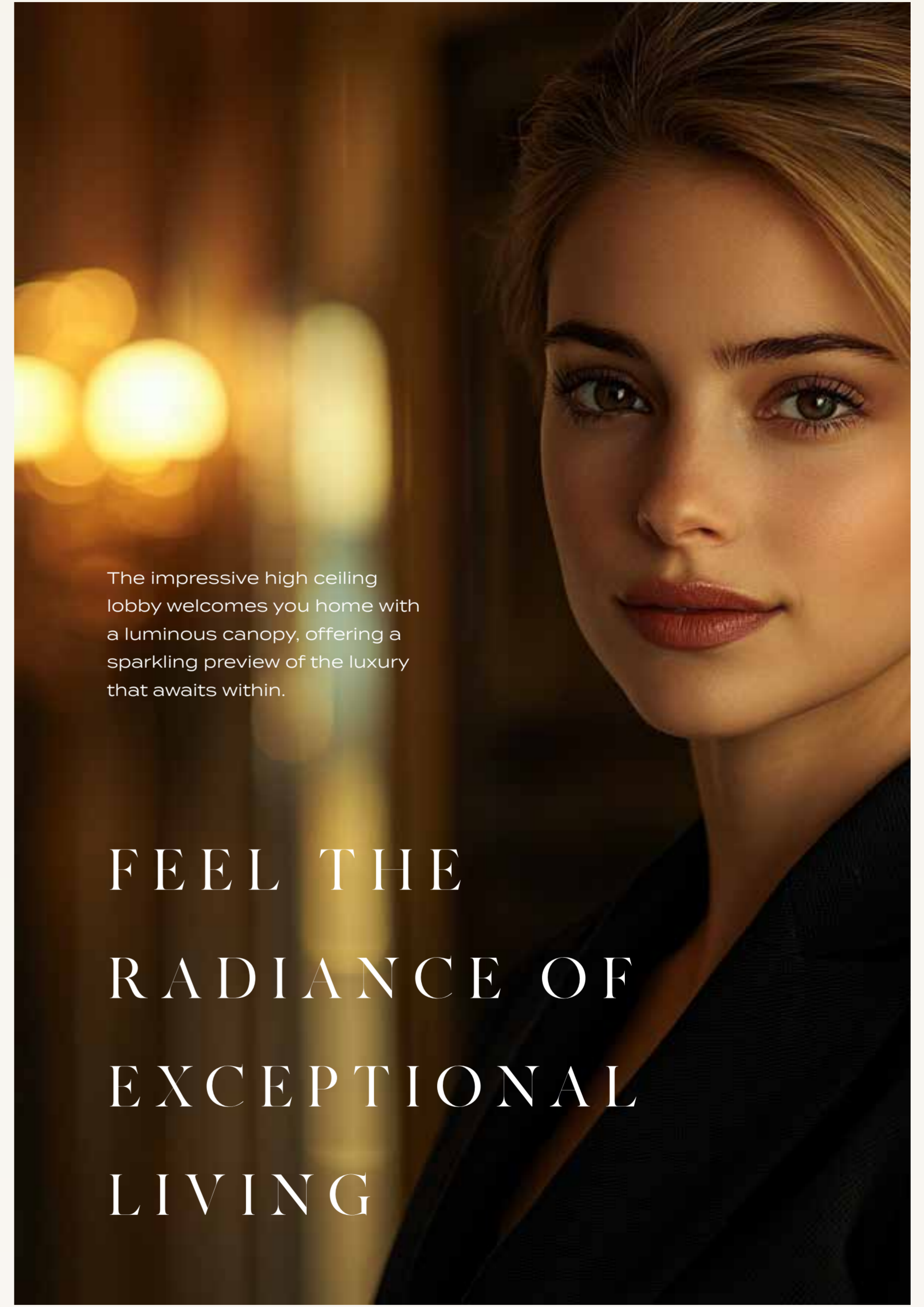


Witness an architectural narrative that breathes and transforms. Safa Gate's design language explores dynamic interactions between solid and void, and a play of light and shadows to create a living structure that adapts and responds to its urban environment with remarkable sophistication and visual complexity. The design orchestrates an intricate dialogue between fluid form, material innovation, and human-centric spatial experiences.





D A M A C S A F A G A T E

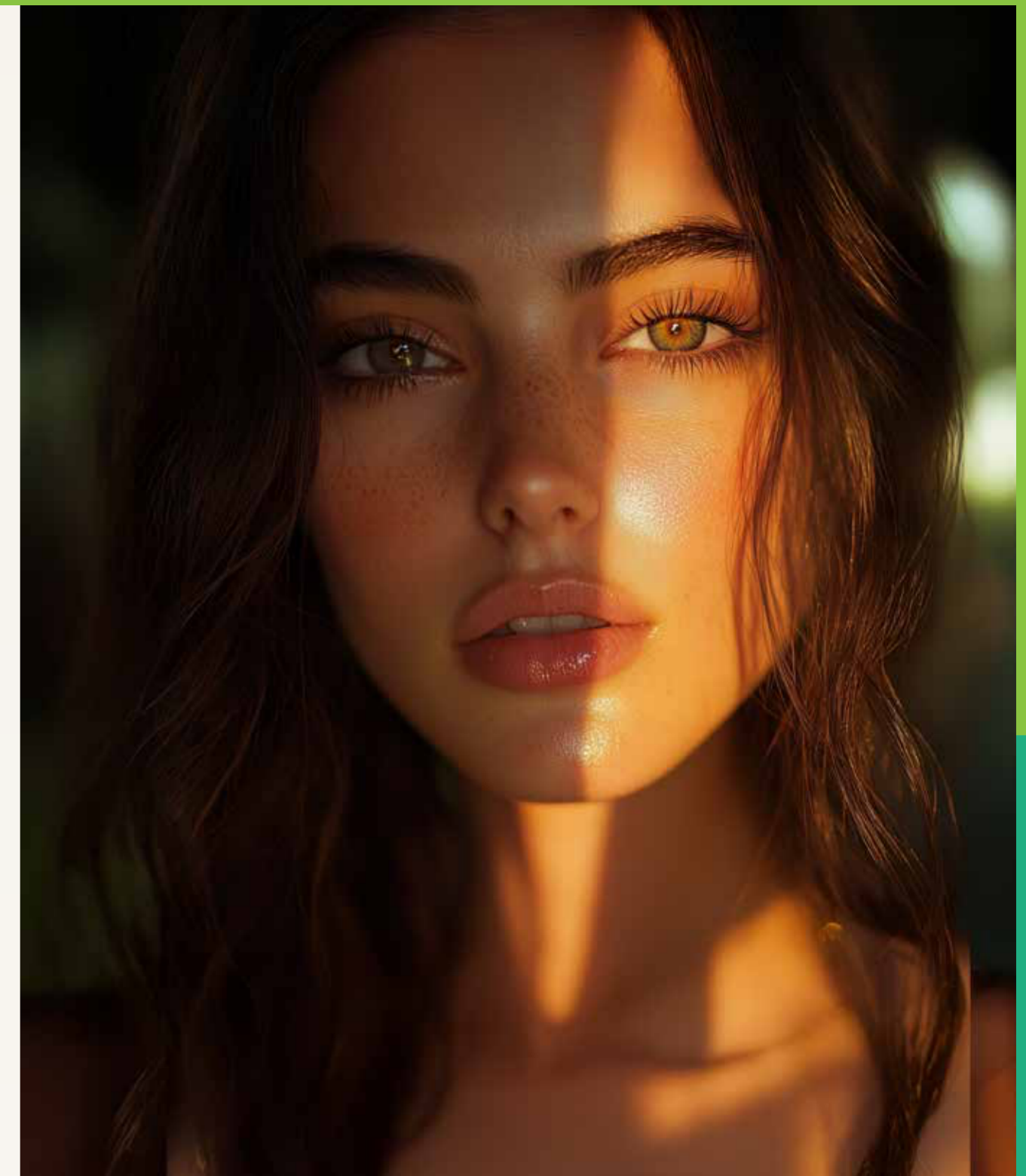


The impressive high ceiling lobby welcomes you home with a luminous canopy, offering a sparkling preview of the luxury that awaits within.

FEEL THE
RADIANCE OF
EXCEPTIONAL
LIVING

A CONNOISSEUR'S HAVEN

S A F A G A T T E

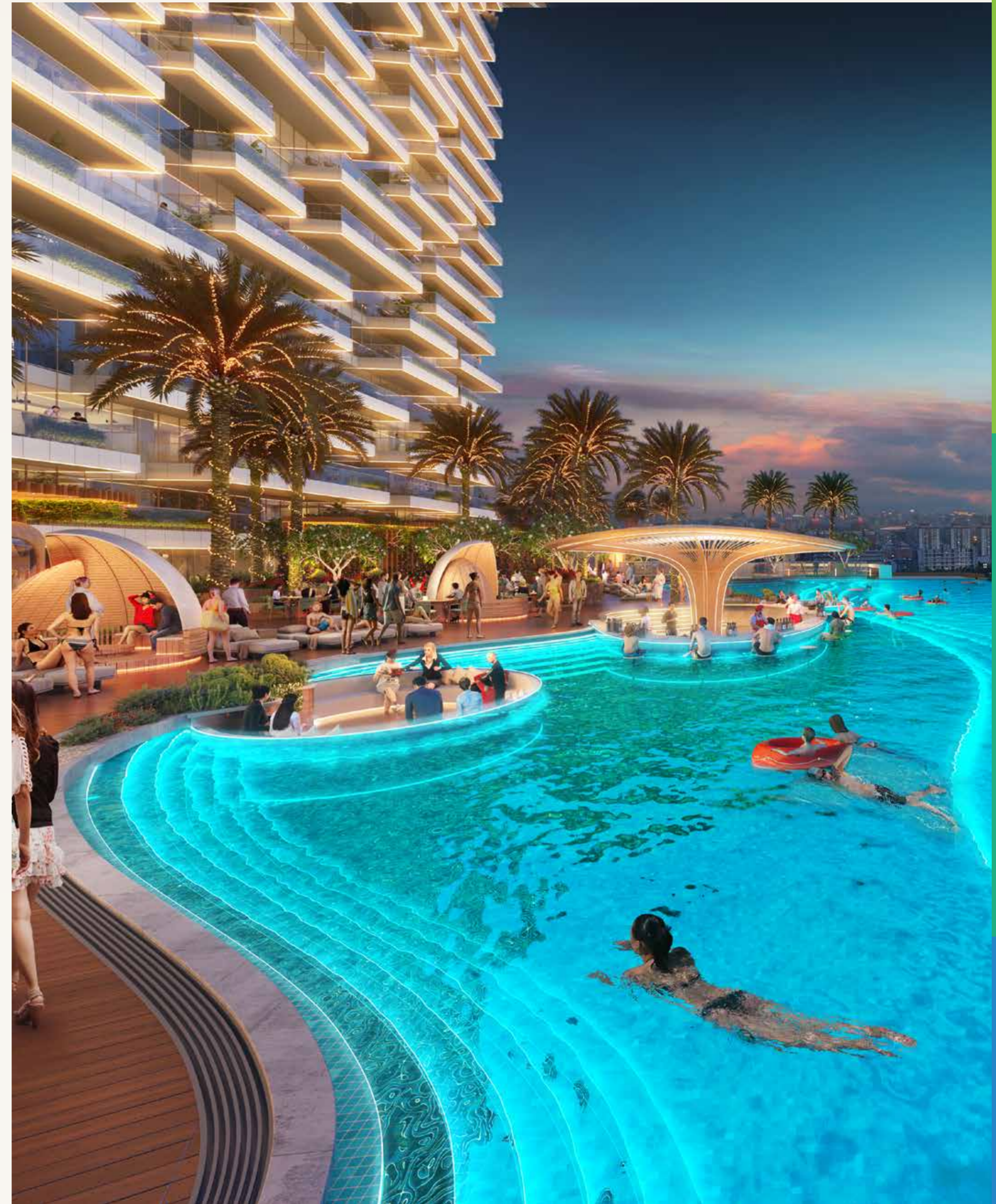


Perched above the city, a private cigar lounge where you can pair your rare vintages with your cigar collection in an atmosphere of timeless sophistication. With intimate gathering spaces framed by panoramic views, this exclusive retreat transforms evening rituals into extraordinary moments.





KALIEDOSCOPIC WONDERLAND



Watch the Aurora Pool transform before your eyes, as vibrant hues dance and shimmer across the water, creating a mesmerising spectacle.

SINK INTO BLISS

Gather your friends and family for a memorable experience. Our circular sunken pool seating offers a unique and intimate space to unwind and socialize.





Experience the future of fitness in the Gravity Gym. Discover a new level of challenge and motivation in a state-of-the-art zone, inspired by the forces of gravity and celestial motion.

OUT OF THIS WORLD FITNESS

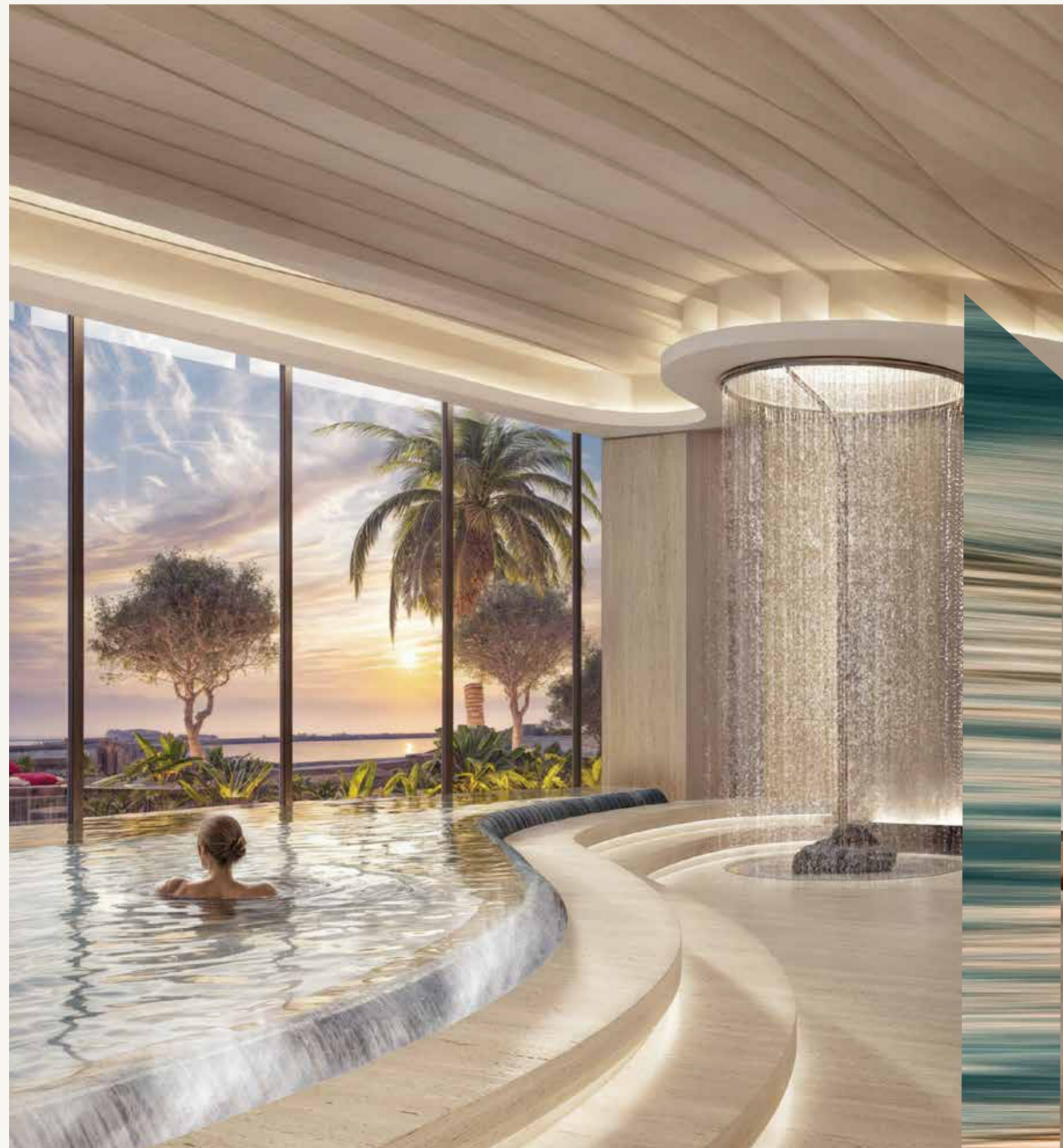




D A M A C S A F A G A T E

ESCAPE TO BLISSFUL REJUVINATION

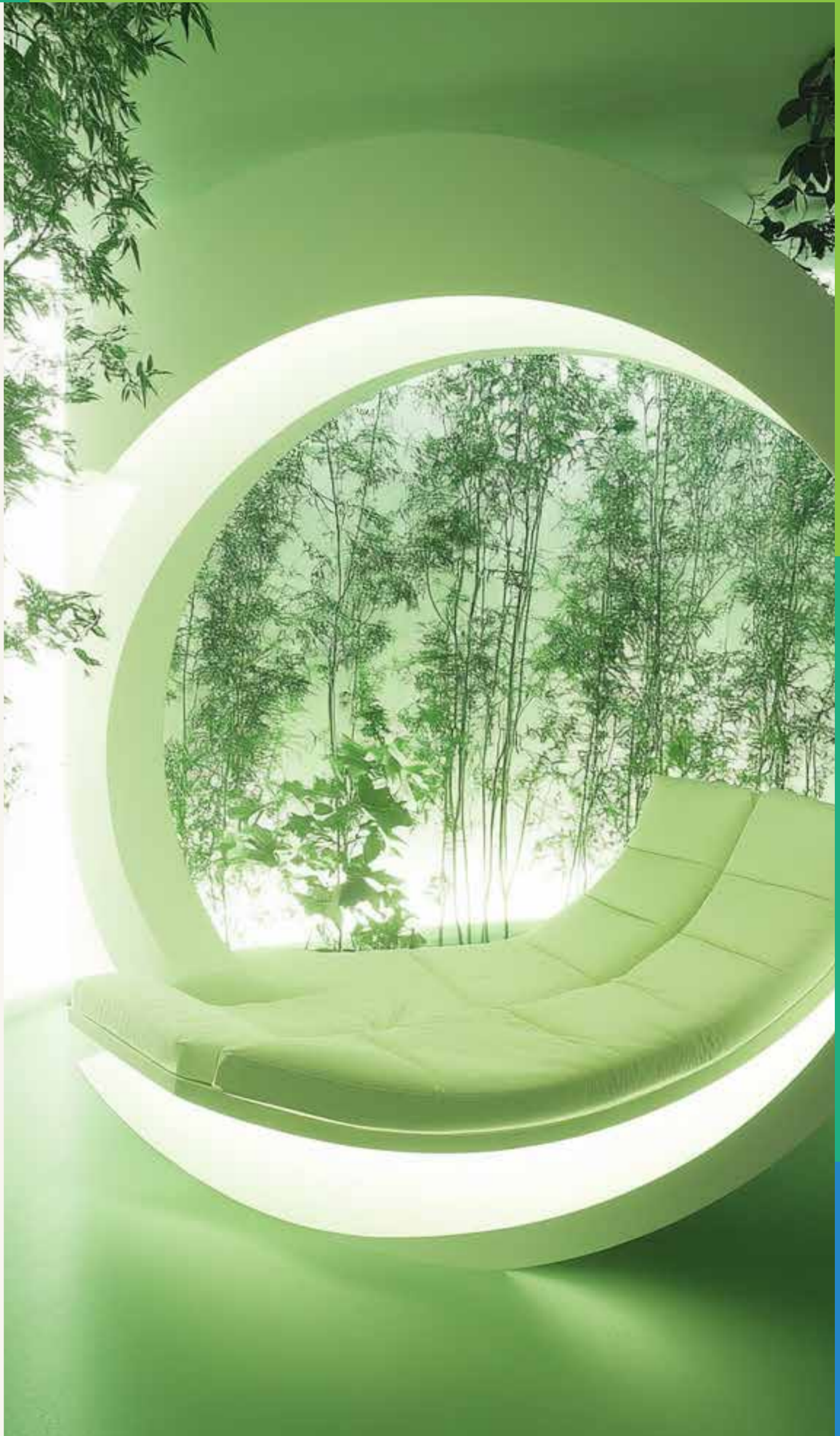
Enter the Lumière Spa, where golden light therapy and pristine hydrotherapy pools create an oasis of renewal. Our meditation dome, infused with choreographed light sequences and surrounded by living gardens, transforms wellness into an art. Here, ancient healing meets modern luxury, offering a sanctuary of radiant rejuvenation above the city.





WORK MEETS WELLNESS

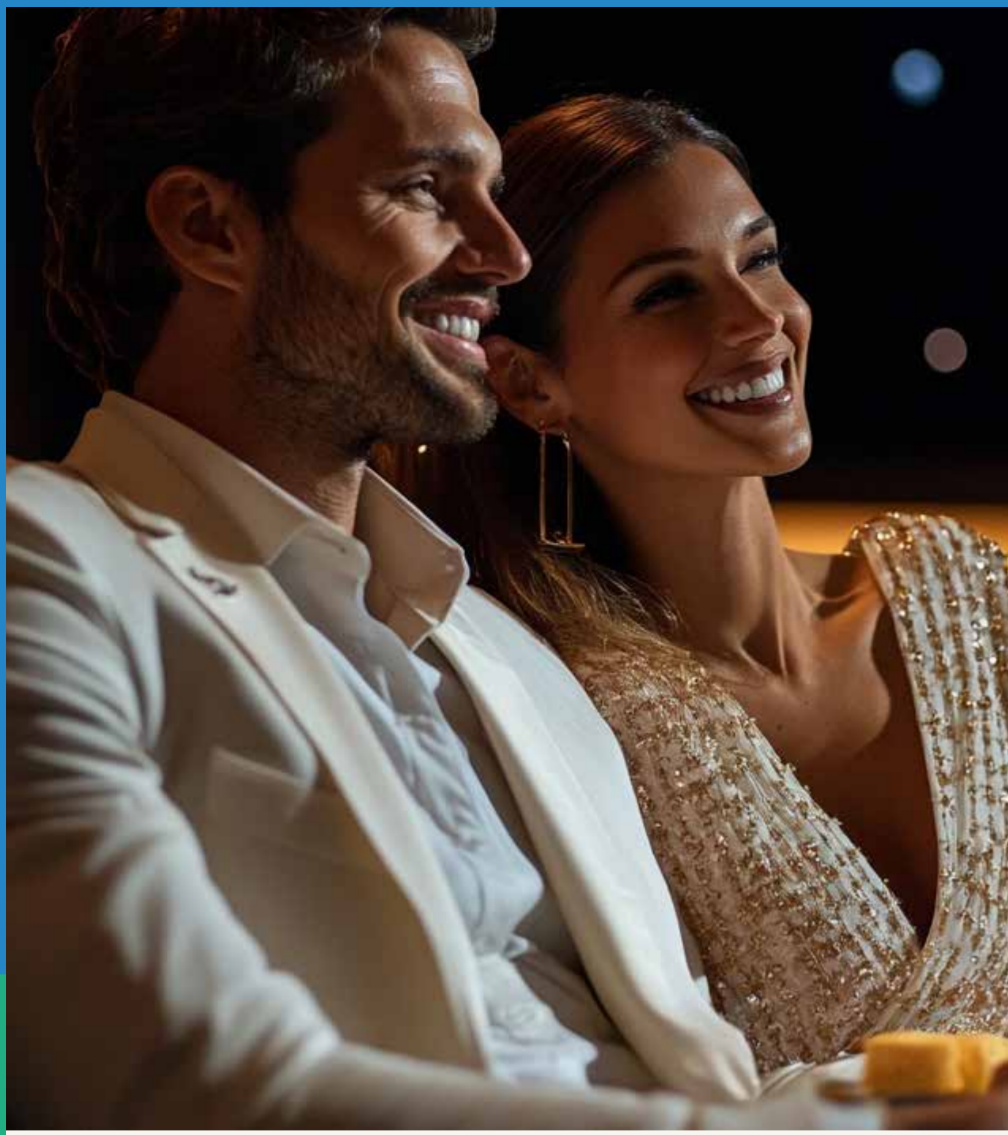
Experience the benefits of ergonomic furniture, tech integration, and natural elements in the Co-working Pods. Escape the noise and distractions to focus and recharge in a collaborative environment.



THE LIGHT RETREAT



Step into a space where light becomes therapy. Our pioneering chamber harnesses chromotherapy technology to create an immersive haven of healing radiance. As gentle waves of light wash over you, feel the day's tensions dissolve in this groundbreaking fusion of wellness and innovation.



COSMIC CURTAIN CALL



Enjoy screenings and performances at the exclusive Eclipse Theatre, featuring a stunning ceiling designed to mimic the celestial phenomenon of a solar and lunar eclipse.

WORKOUTS WITH A VIEW

Break free from conventional fitness spaces. Our open-air gym on Level 5, transcends traditional workout environments, inviting you to challenge your body while your eyes feast on Dubai's breathtaking cityscape

ENJOY AN ELEVATED RENDEZVOUS

Botanical artistry meets Dubai's golden hour, our rooftop sanctuary elevates the art of evening leisure. Nestled among curated gardens, this exclusive belvedere offers masterfully crafted drinks against a canvas of Dubai's most captivating sunsets. As day transforms to dusk, watch the city ignite while surrounded by the serenity of elevated gardens and the sophistication of artisanal mixology.



db DUBRICKS
POSSIBILITIES ARE LIMITLESS



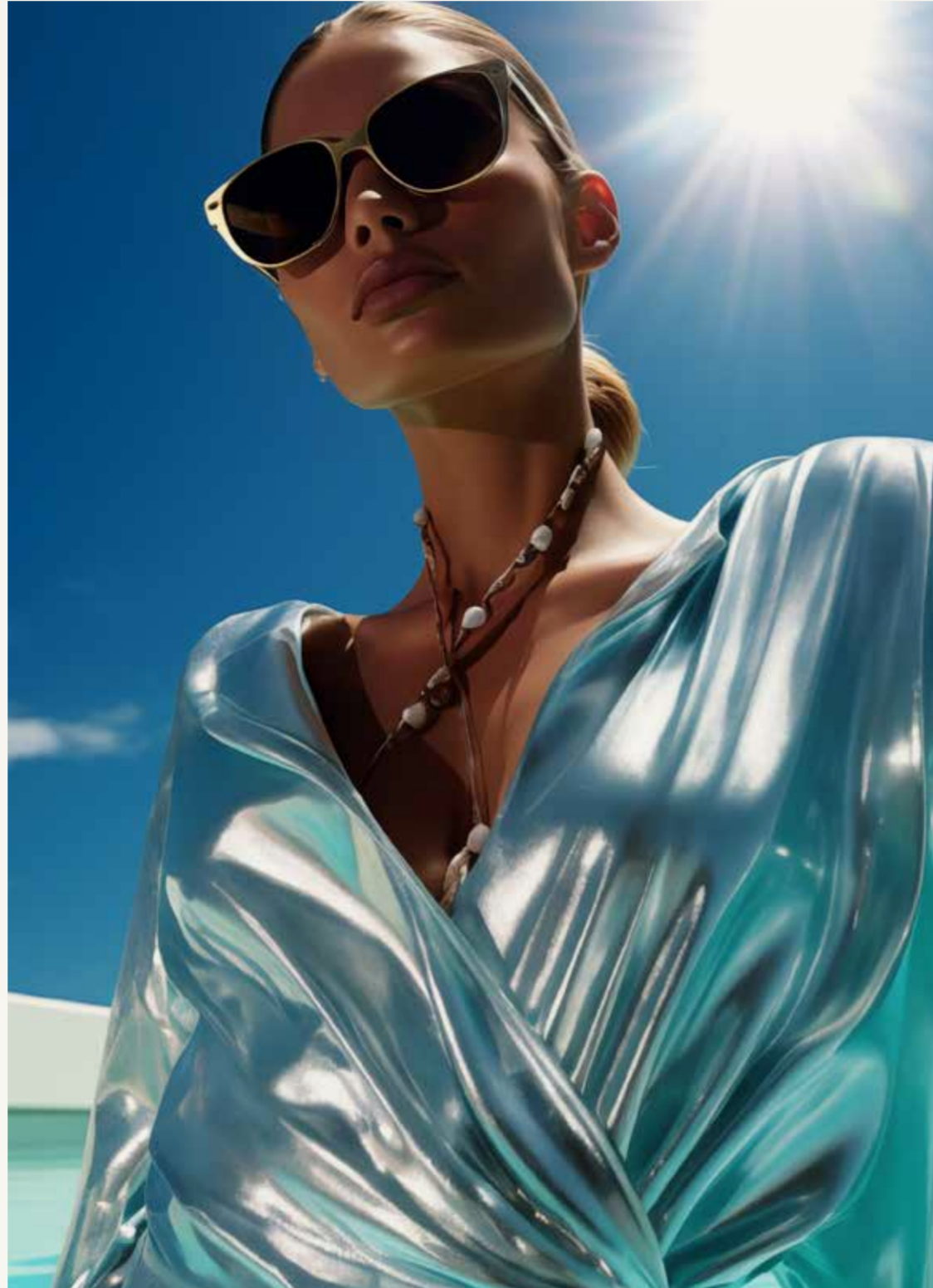
SUNDANCE IN THE SKY

Ascend to a celestial perch, where Dubai unfolds beneath you in a breathtaking 360-degree panorama. Designed to echo the fiery dance of solar flares, this observation deck offers an unparalleled vantage point, a stage where the city's vibrant tapestry meets the vast canvas of the sky.



YOUR AERIAL WELLNESS RETREAT

Escape the city's clamour and immerse yourself in tranquility. Our retreat pool, a sanctuary of serenity, invites you to unwind amidst a symphony of soothing water and the gentle embrace of native flora. Here, amidst the verdant tapestry and the murmur of flowing water, find your center and rediscover the art of peaceful repose.



RELAXATION MEETS
INSPIRATION

SARAF GATE



Immerse yourself in serenity, where the tranquil embrace of our Zen plunge pool meets the breathtaking panorama of Dubai. Here, amidst the soothing murmur of water and the stunning cityscape, find a sanctuary for both productivity and profound relaxation. Let the tranquil environment inspire your thoughts and renew your spirit, offering a unique escape from the everyday.



SARAF GATE

THERE IS NO SOLITUDE IN THE WORLD
LIKE THAT OF THE BIG CITY

— KATHLEEN NORRIS



SKY MEETS SERENITY

Step into a world of unparalleled luxury where expansive living spaces meet breathtaking panoramas. Sunlight streams through floor-to-ceiling windows, illuminating the grand living room which features a sweeping duplex staircase that ascends to a private sanctuary above.







Indulge in the ultimate sanctuary within your private haven. The master bedroom, a symphony of opulence, promises a serene ambiance where each facet whispers classy luxury. Soft, plush textures caress your senses, while panoramic windows frame a mesmerizing vista of the city's mesmerising views. Here, amidst the grandeur, you'll feel like you're floating on air, with the world at your feet.

YOUR ROYAL RETREAT

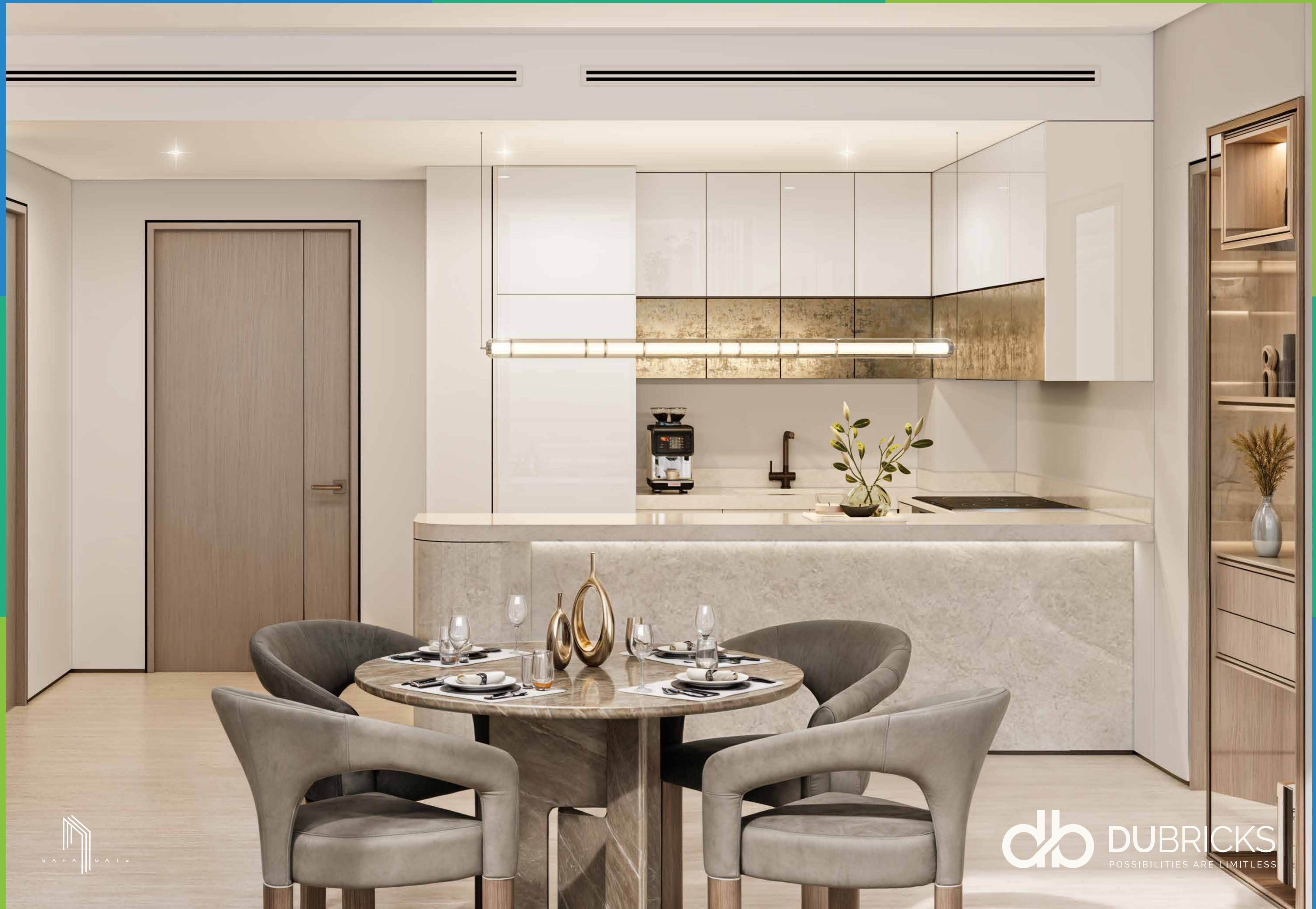


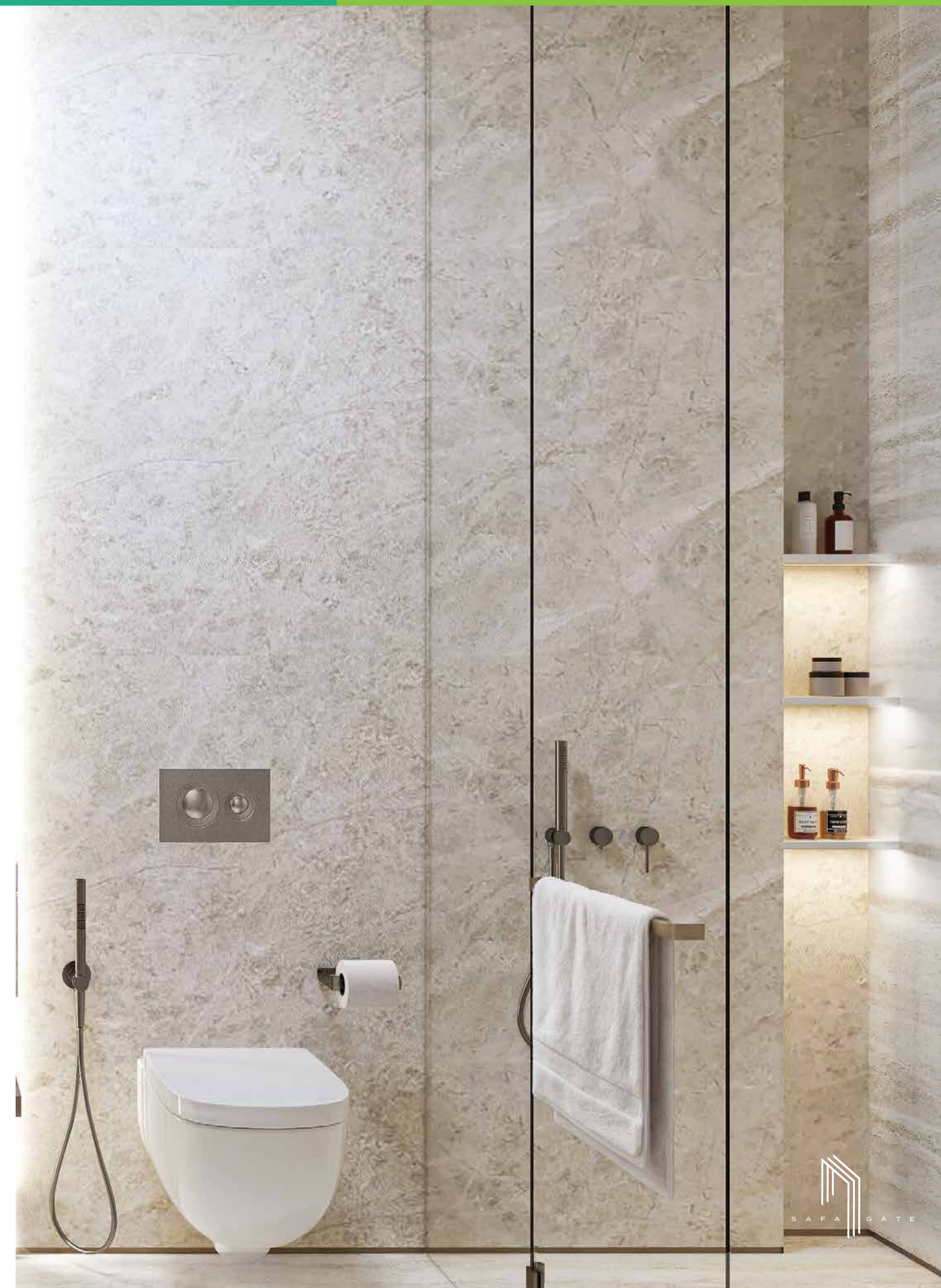


D A M A C S A F A G A T E













DUBRICKS

POSSIBILITIES ARE LIMITLESS

FOR MORE INFORMATION, PLEASE CONTACT US.



+971 50 674 2020



+971 4 242 2020



info@dubricks.com



www.dubricks.com

